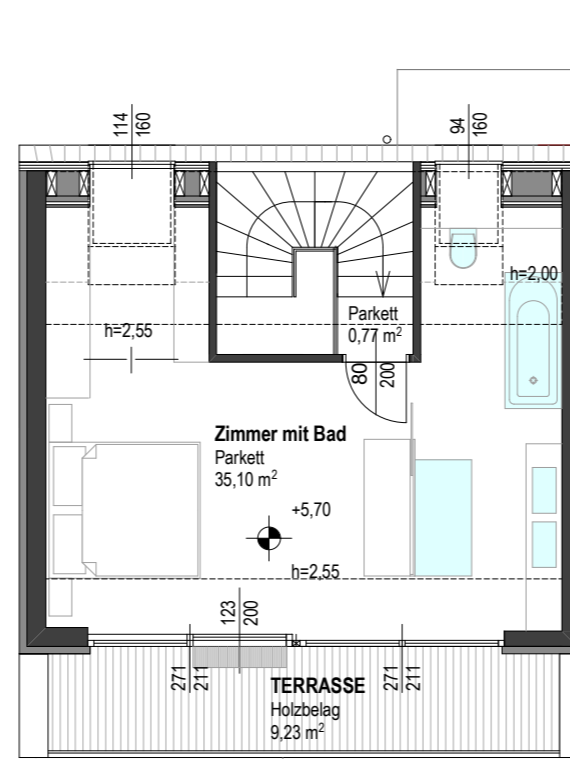
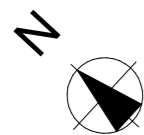
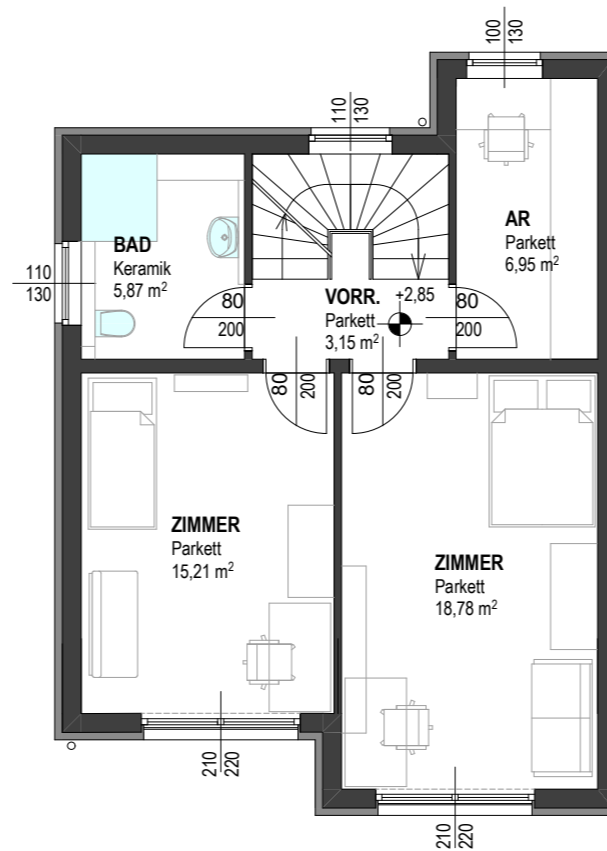


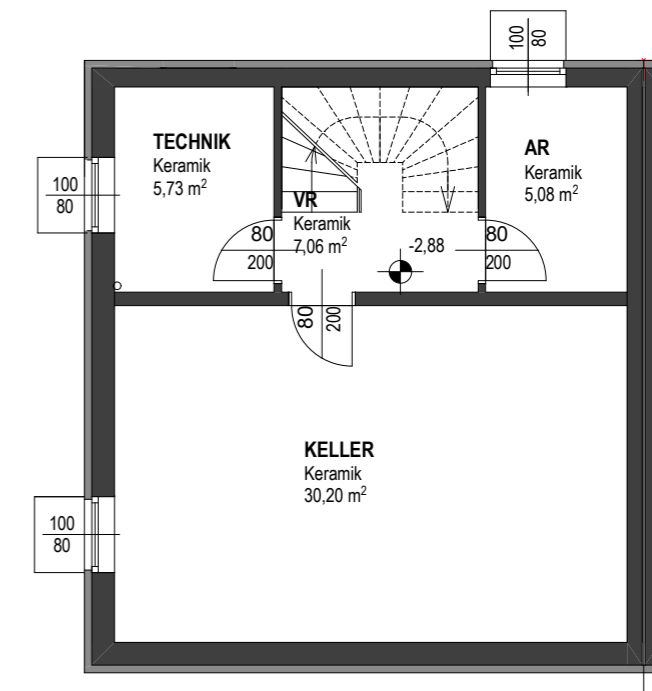
EG



DG



OG



UG

Waldviertlerweg 16

| | | | |
|---|----------------------|--------------|-------------------------------------|
| EG | 46,39 m ² | KG | 48,07 m ² |
| 1.OG | 49,96 m ² | Terrasse | 15,14 m ² |
| DG | 35,87 m ² | Dachterrasse | 9,23 m ² |
| Wohnfläche: 131,86 m² | | Garten | 67,85 m ² m ² |

Die dargestellte Möblierung dient nur zur Illustration